

Asian Geodata @ Harvard



AAS San Diego
23 Mar 2013

merrick lex berman
center for geographic analysis

Collections with new data



G. W. Skinner Archive



CHGIS



ChinaMap



China's History in Maps



JapanMap



TibetMap

Skinner: JapanG (1887) *kokudaka* for each Gun



JapanG 1887 - Kokudaka

classification:

Natural Breaks (Jenks)

0 - 10875

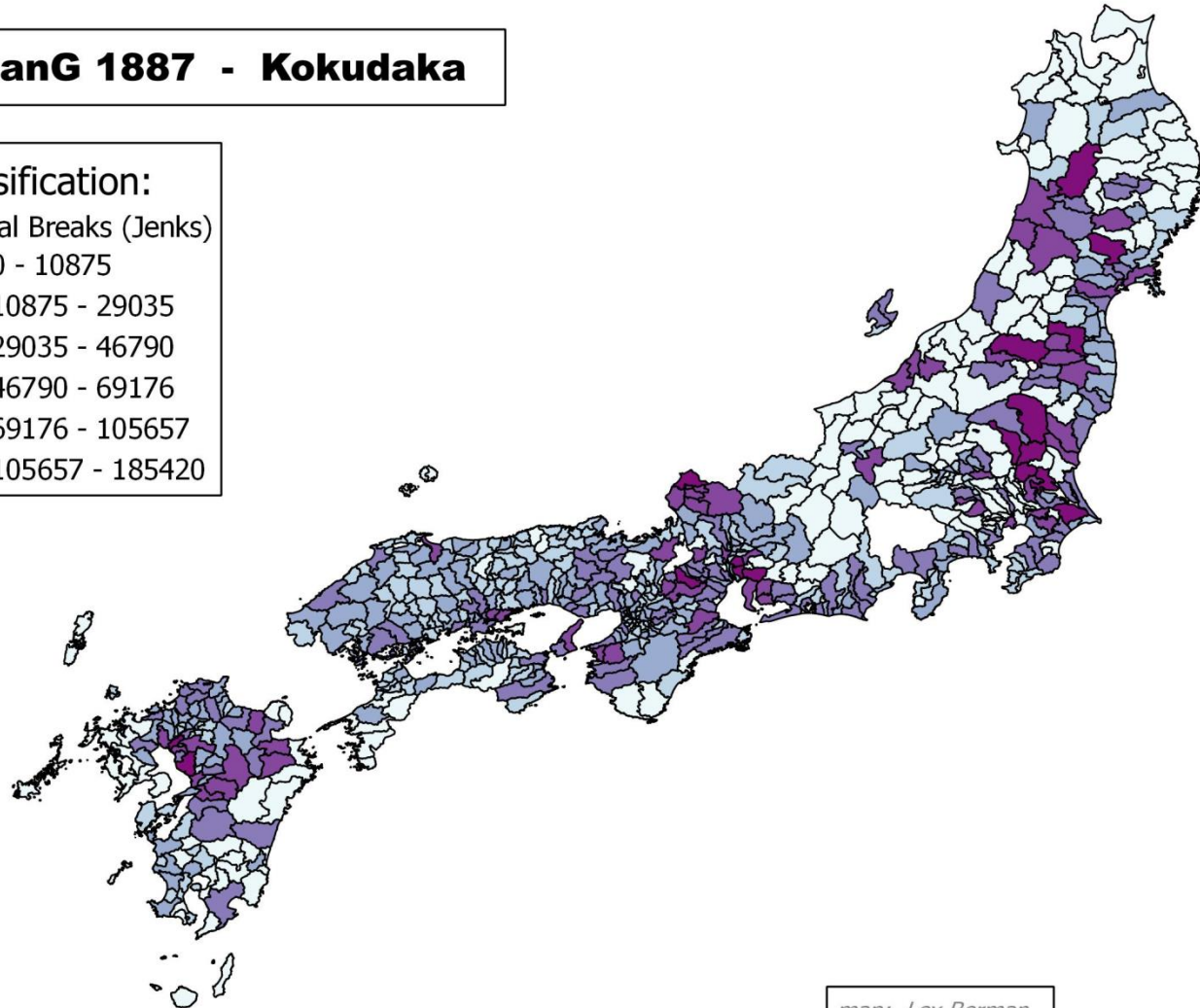
10875 - 29035

29035 - 46790

46790 - 69176

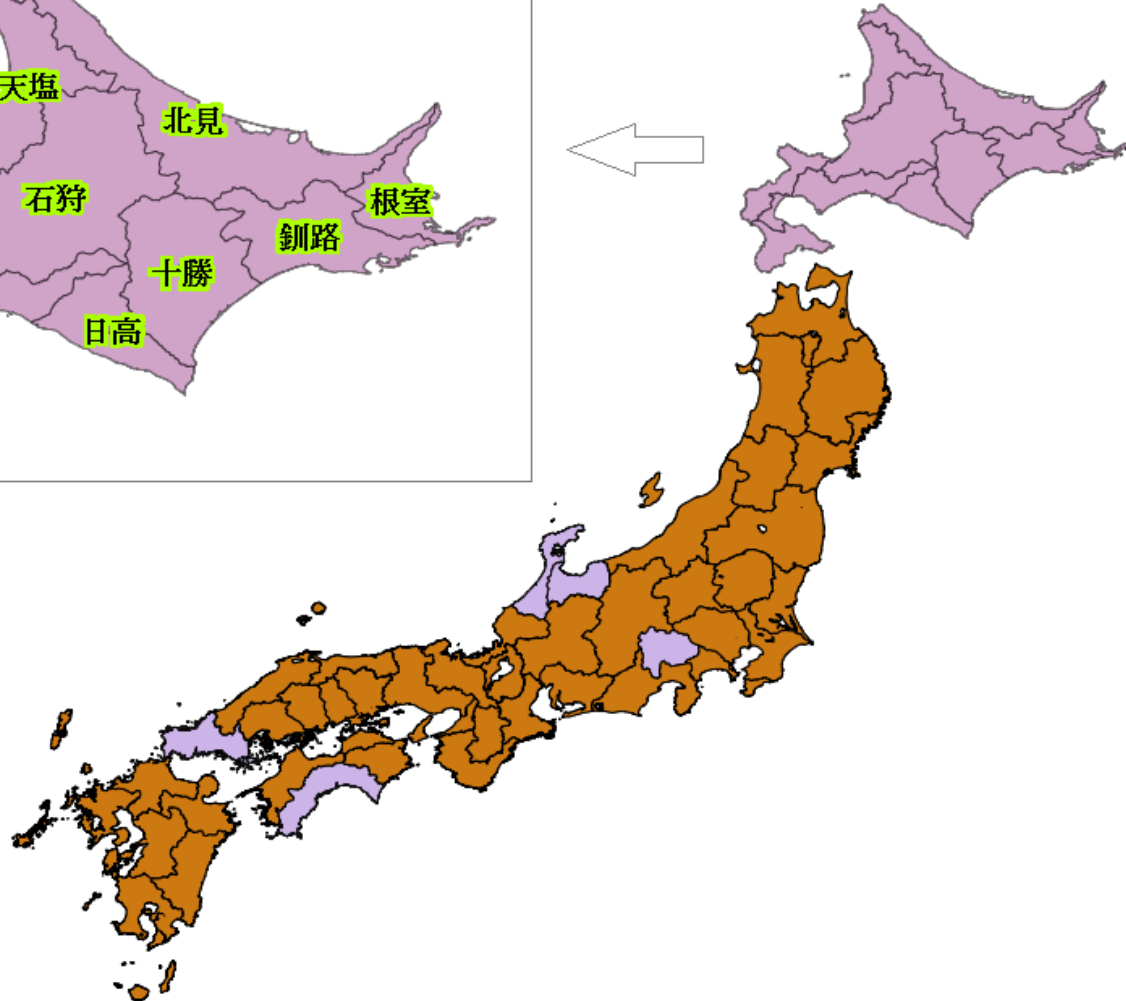
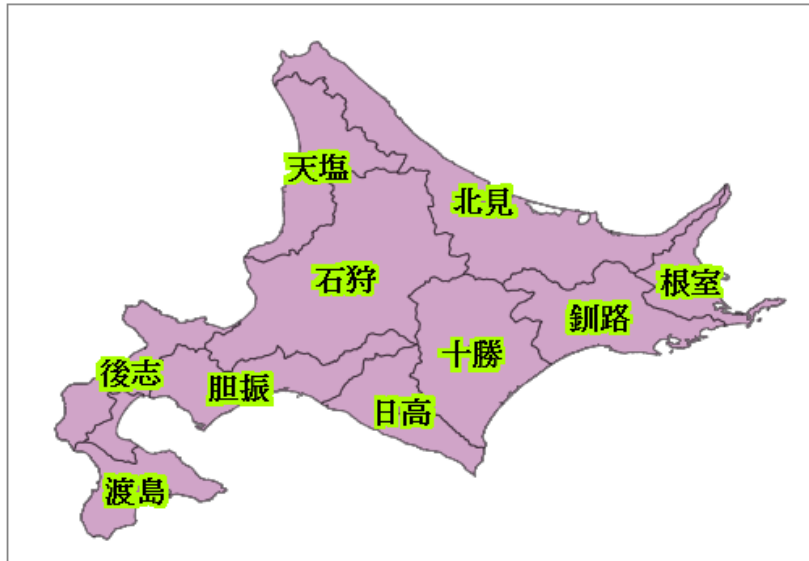
69176 - 105657

105657 - 185420

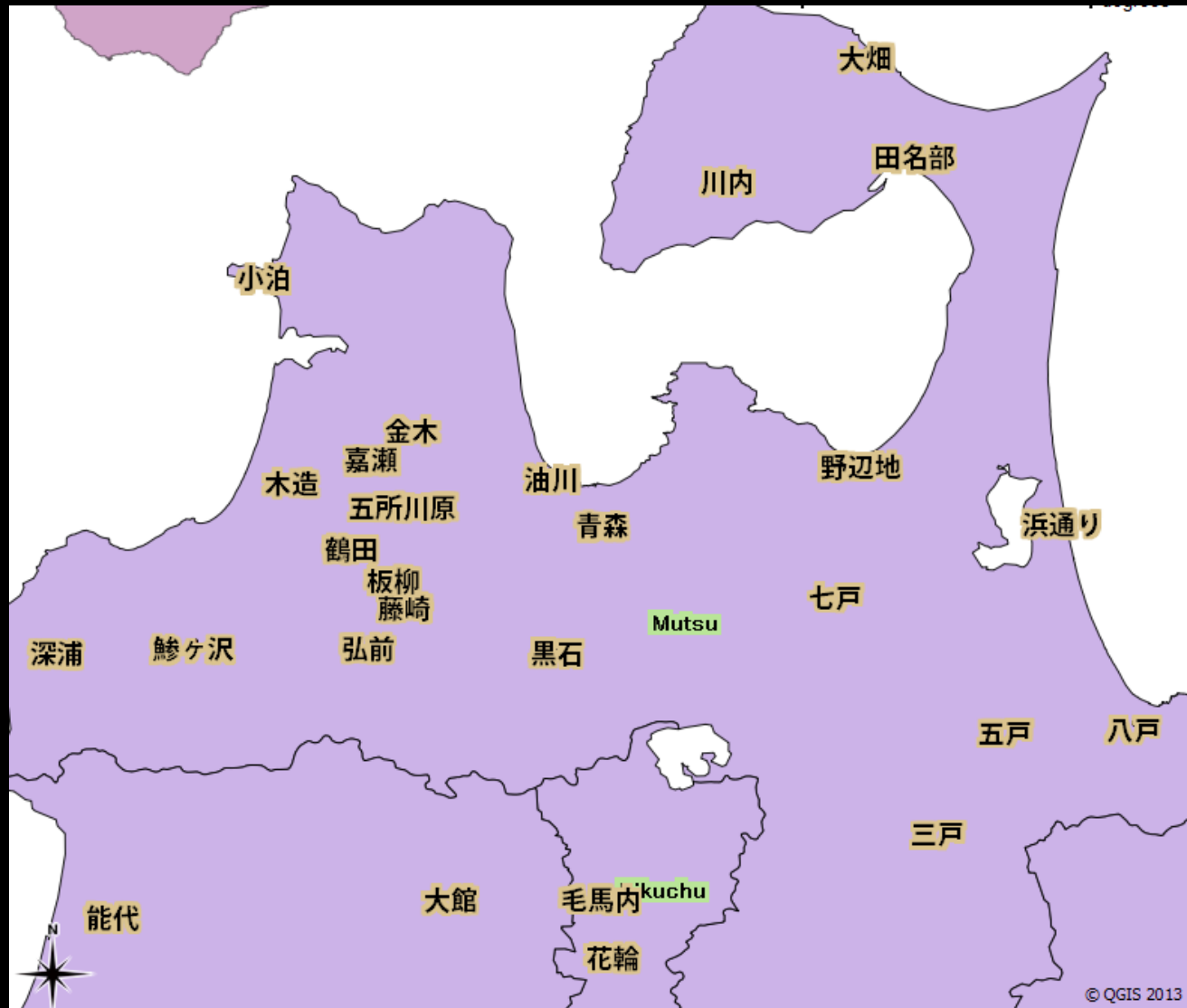


map: Lex Berman

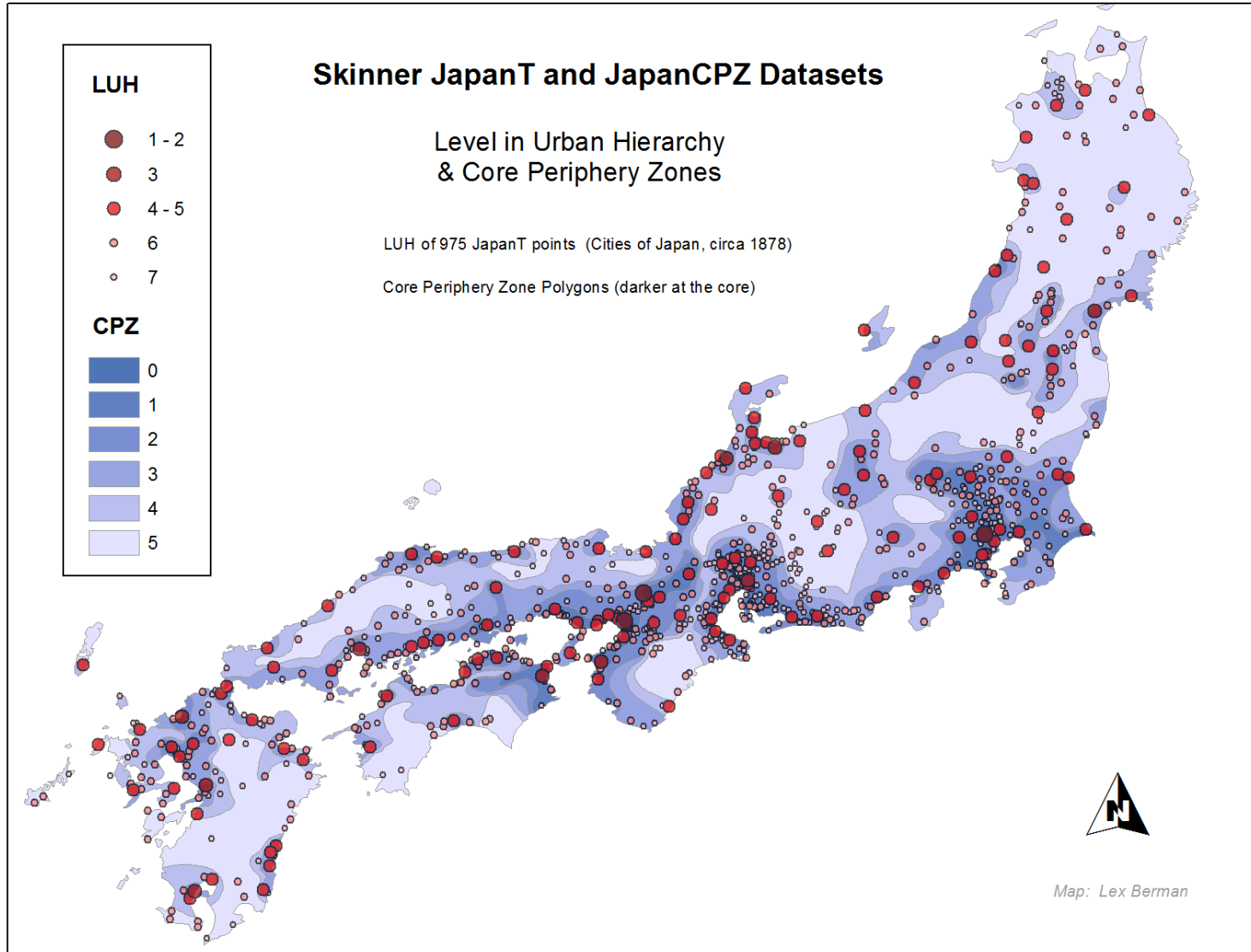
Skinner: JapanG (1887) *Kuni update, inc. Hokkaido*



Skinner: JapanT (1878) *cities of Japan w Kanji names*



Skinner: JapanT and Core Periphery Zones

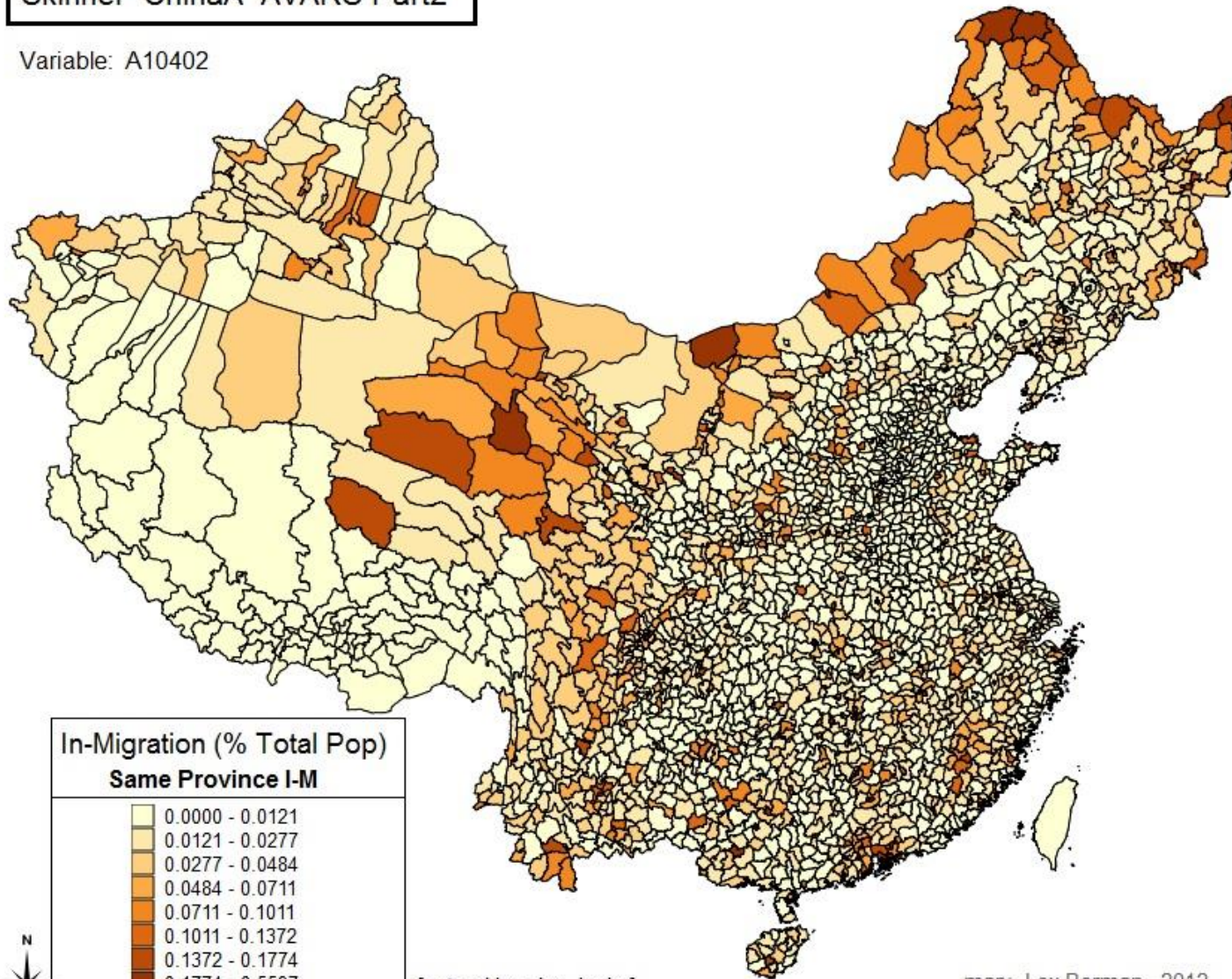


Skinner: ChinaA (1990 county-level units) in-migration



Skinner ChinaA AVARS Part2

Variable: A10402



[natural breaks, Jenks]

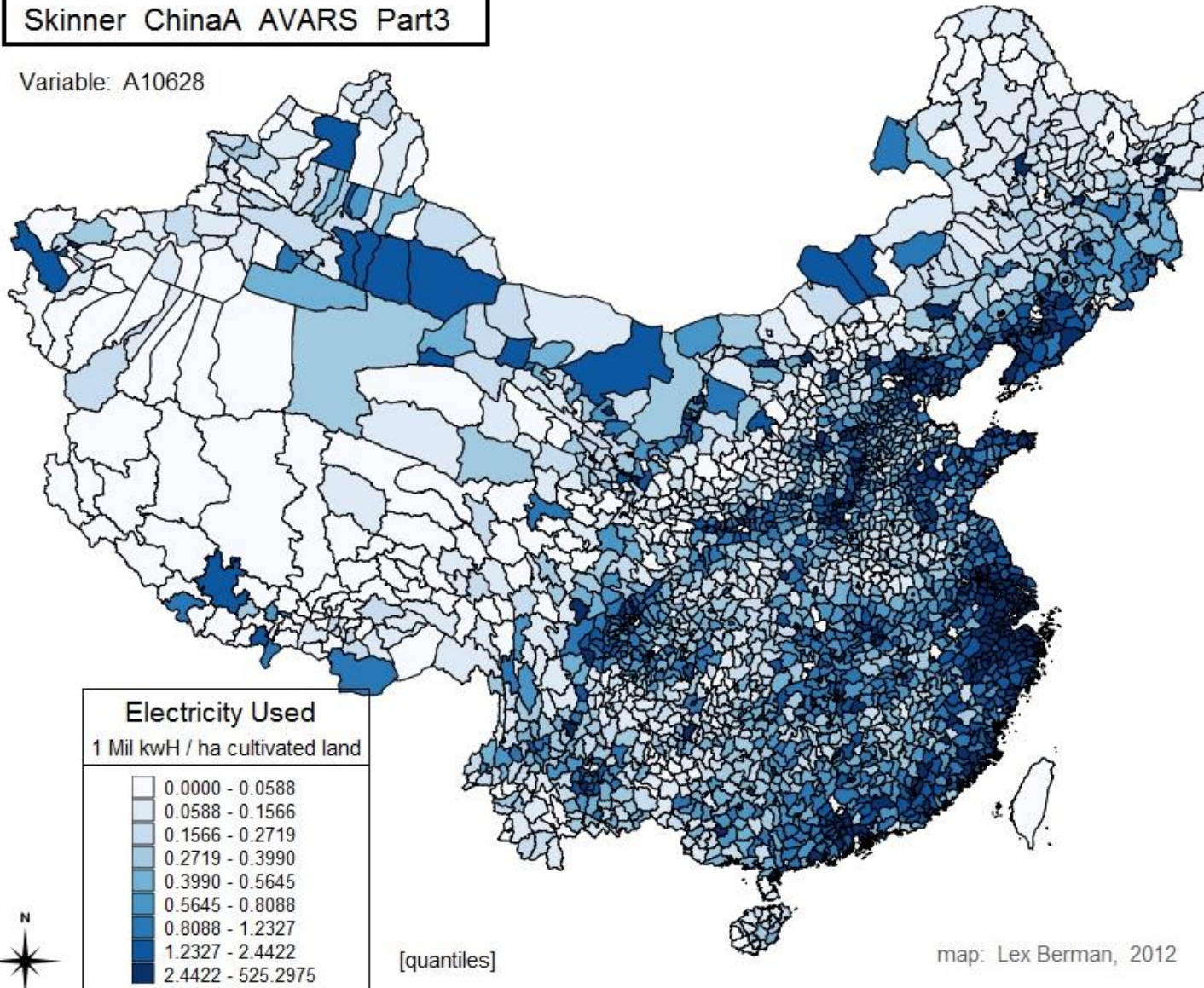
map: Lex Berman, 2012

Skinner: ChinaA (1990 county-level units)



Skinner ChinaA AVARS Part3

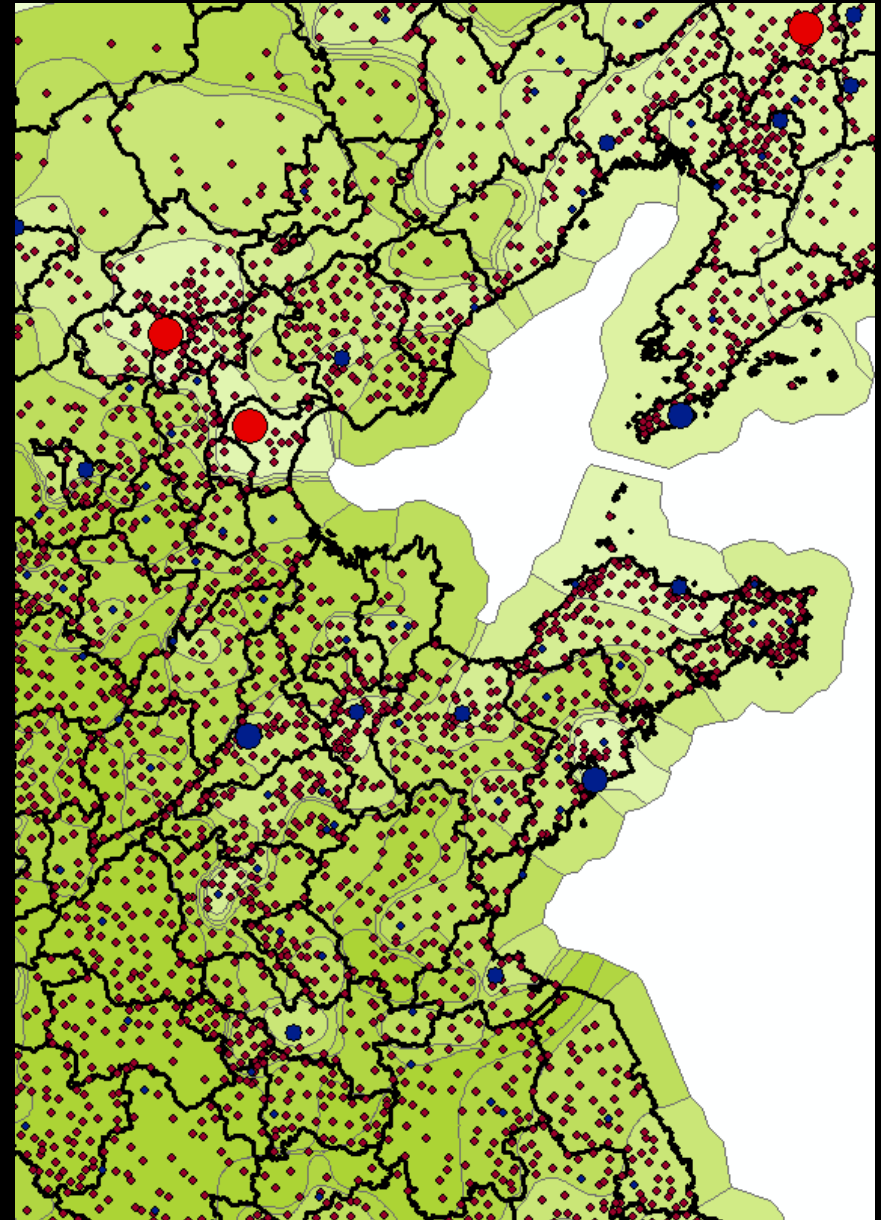
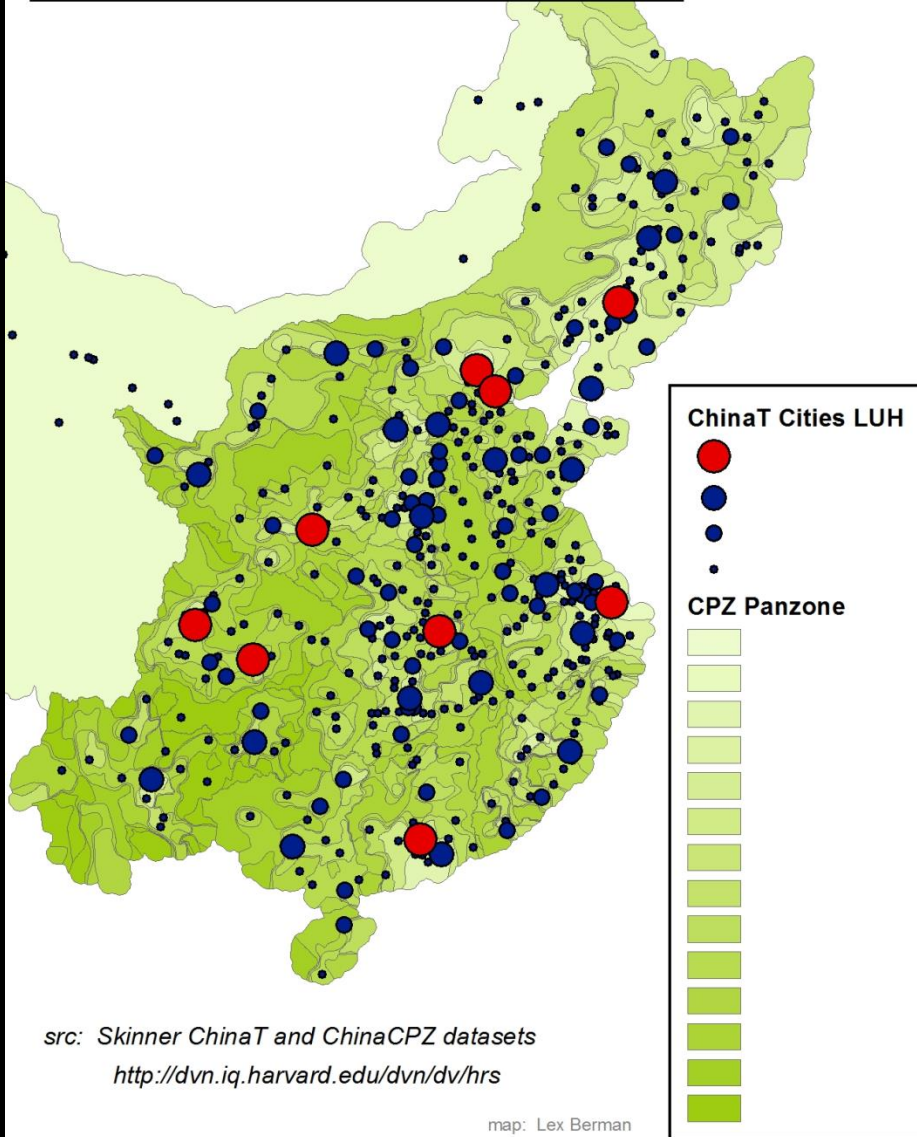
Variable: A10628



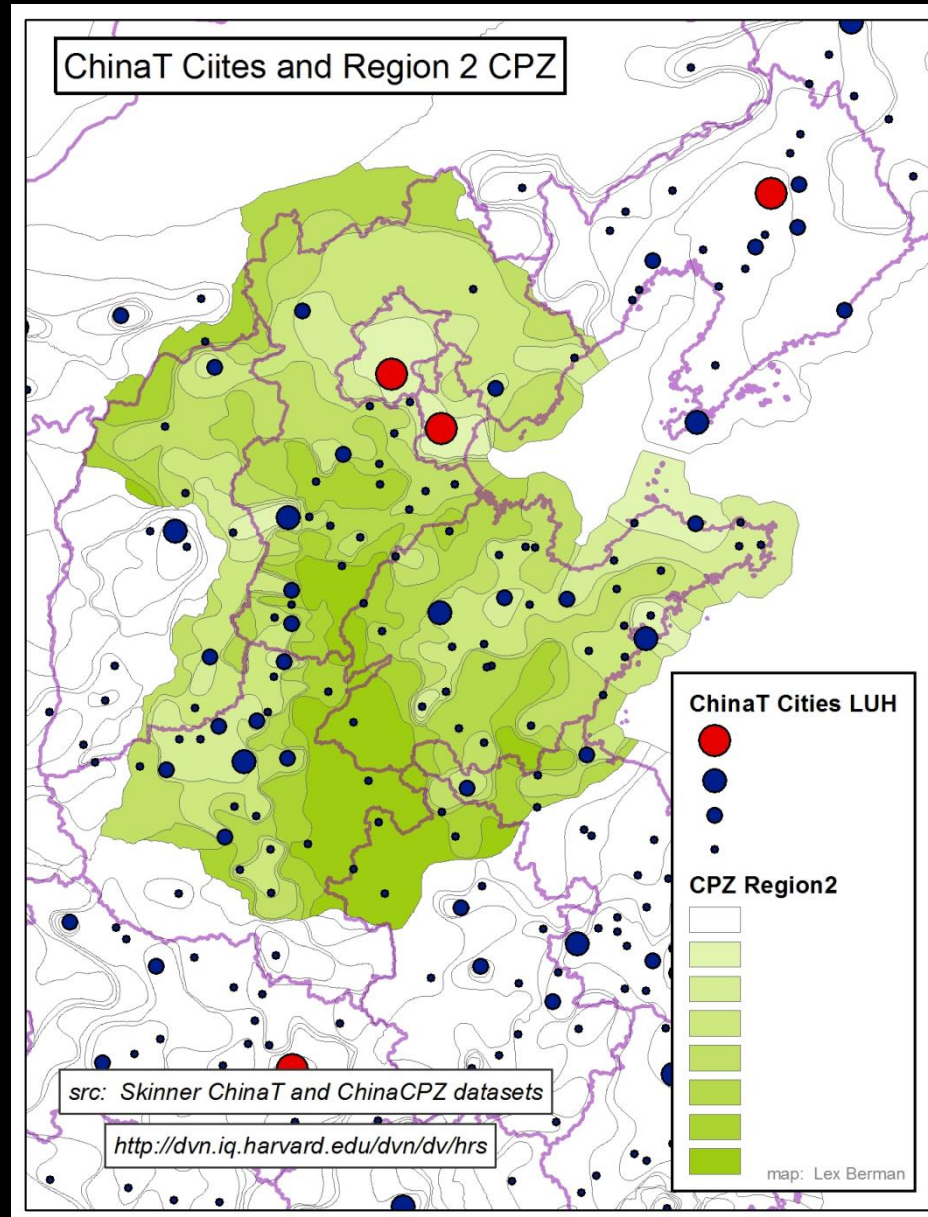
Skinner: ChinaT and Core Periphery Zones



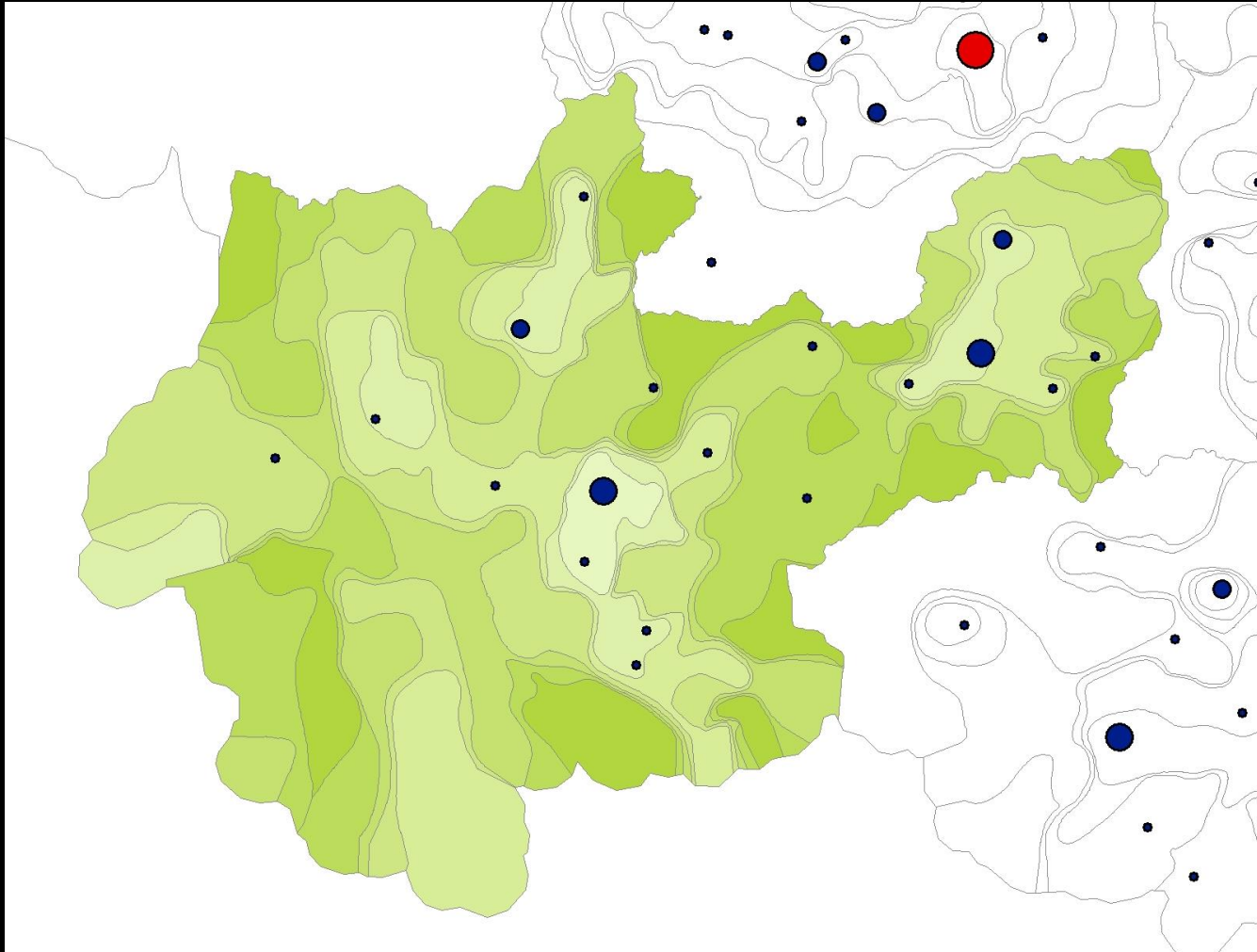
ChinaT Cities and Core Periphery Zones



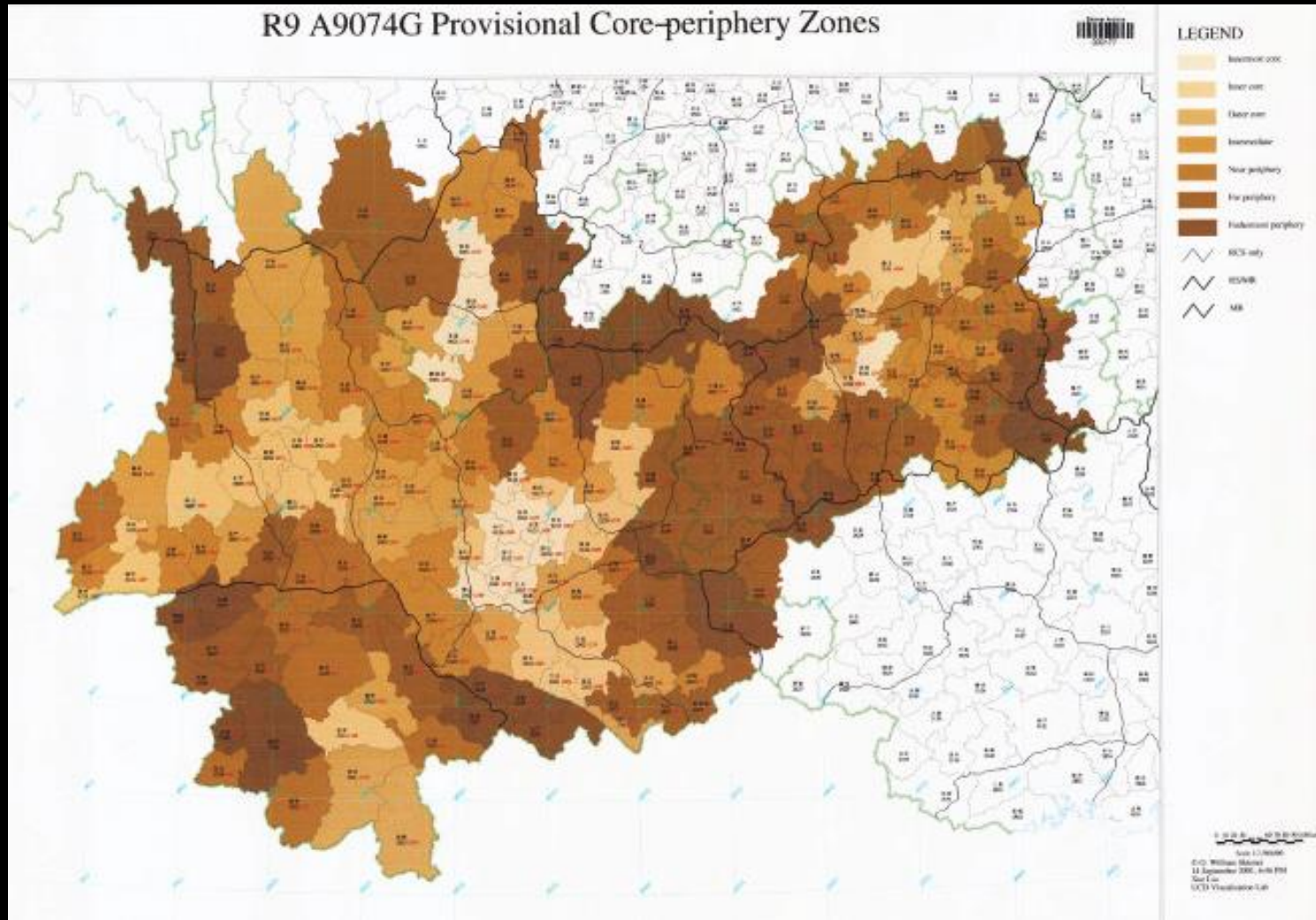
Skinner: ChinaT Cities and Region2 CPZ



Skinner: ChinaCPZ Core Periphery Zones Region9



Skinner: ChinaCPZ Region9 based on RCS map (UW)



CHGIS: Version 5



CHINA HISTORICAL GIS - VERSION 5 (2012)

V5 Home

Data List

CHGIS Website

中文

V5 Home

About

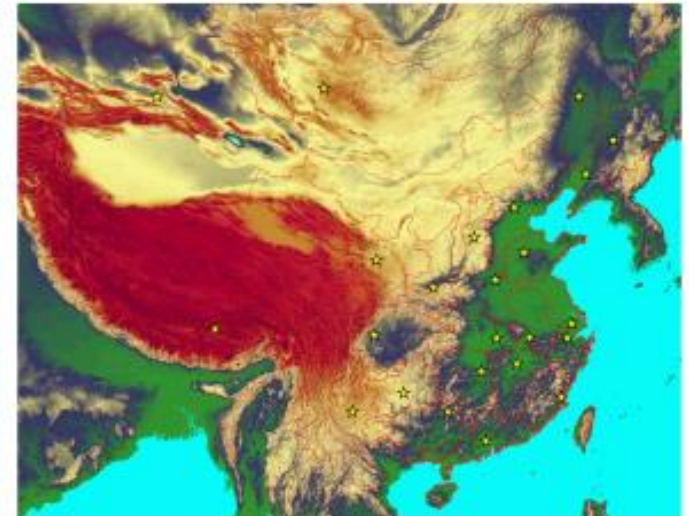
How-To

Datasets

Software

Credits

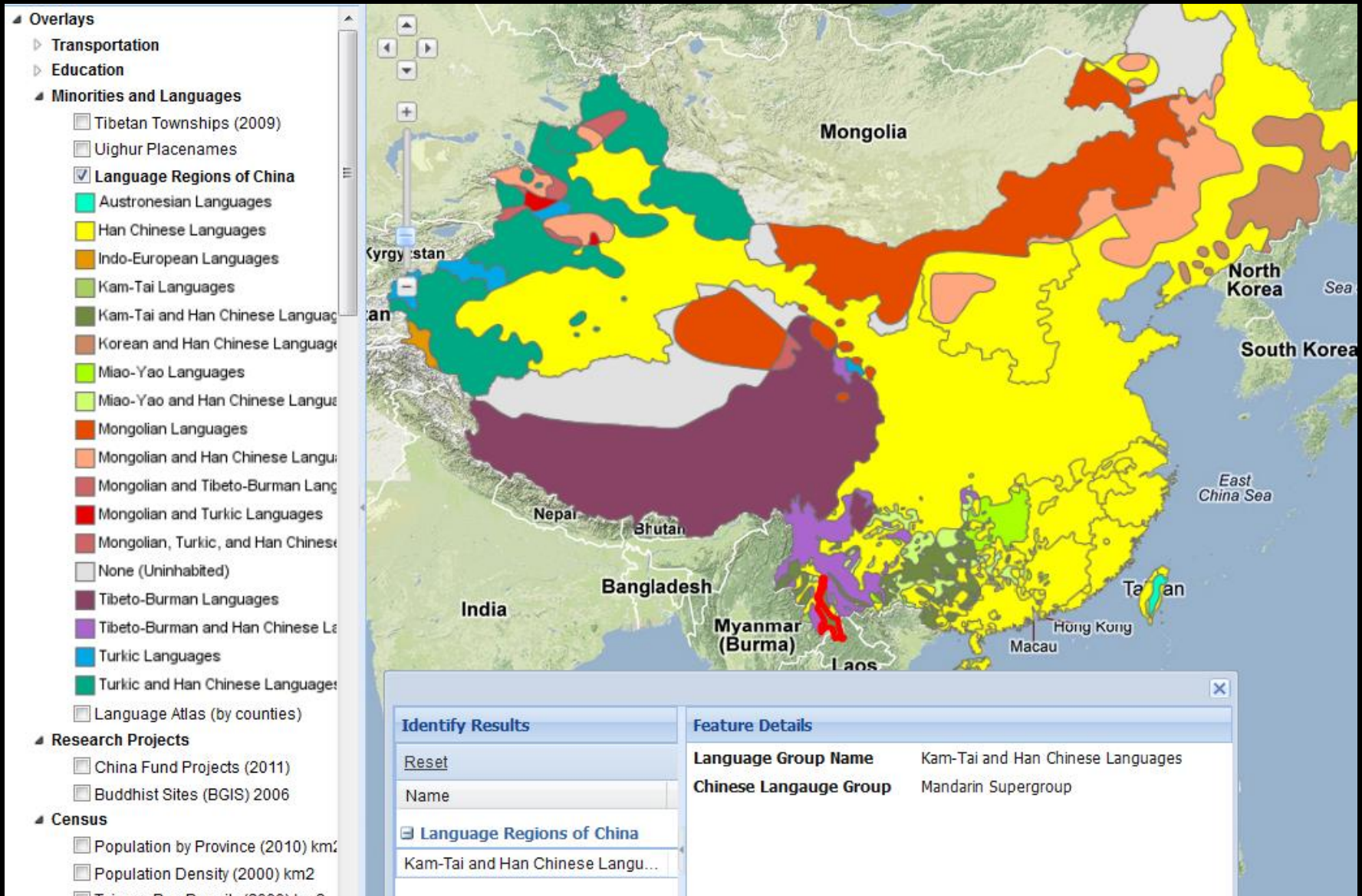
Website



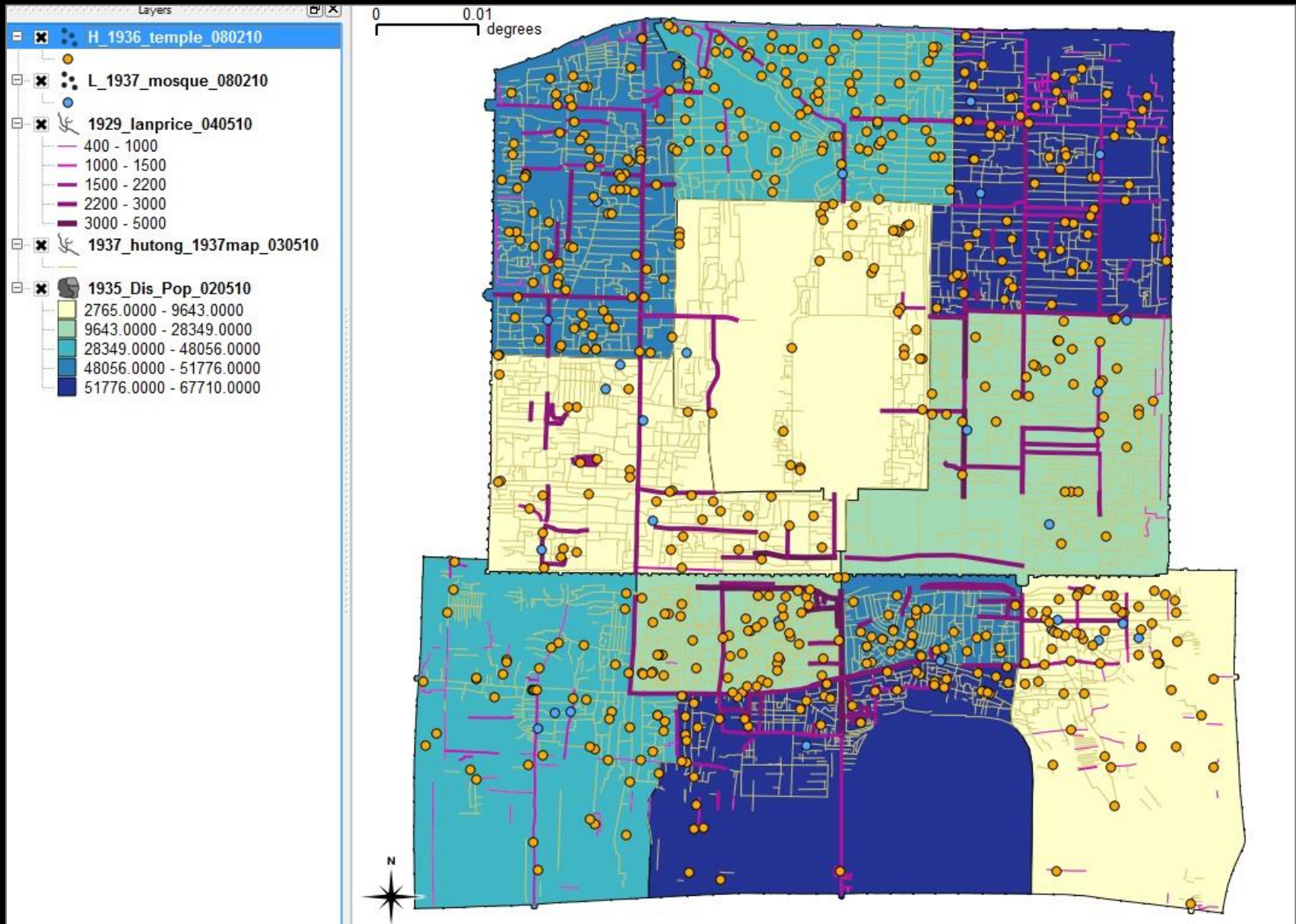
(c) 2000-2010 CHGIS - Fairbank Center for Chinese Studies & ICHG Fudan University

<http://www.fas.harvard.edu/~chgis/data/chgis/downloads/v5>

CHGIS: ACASIAN Language Regions (in Process)



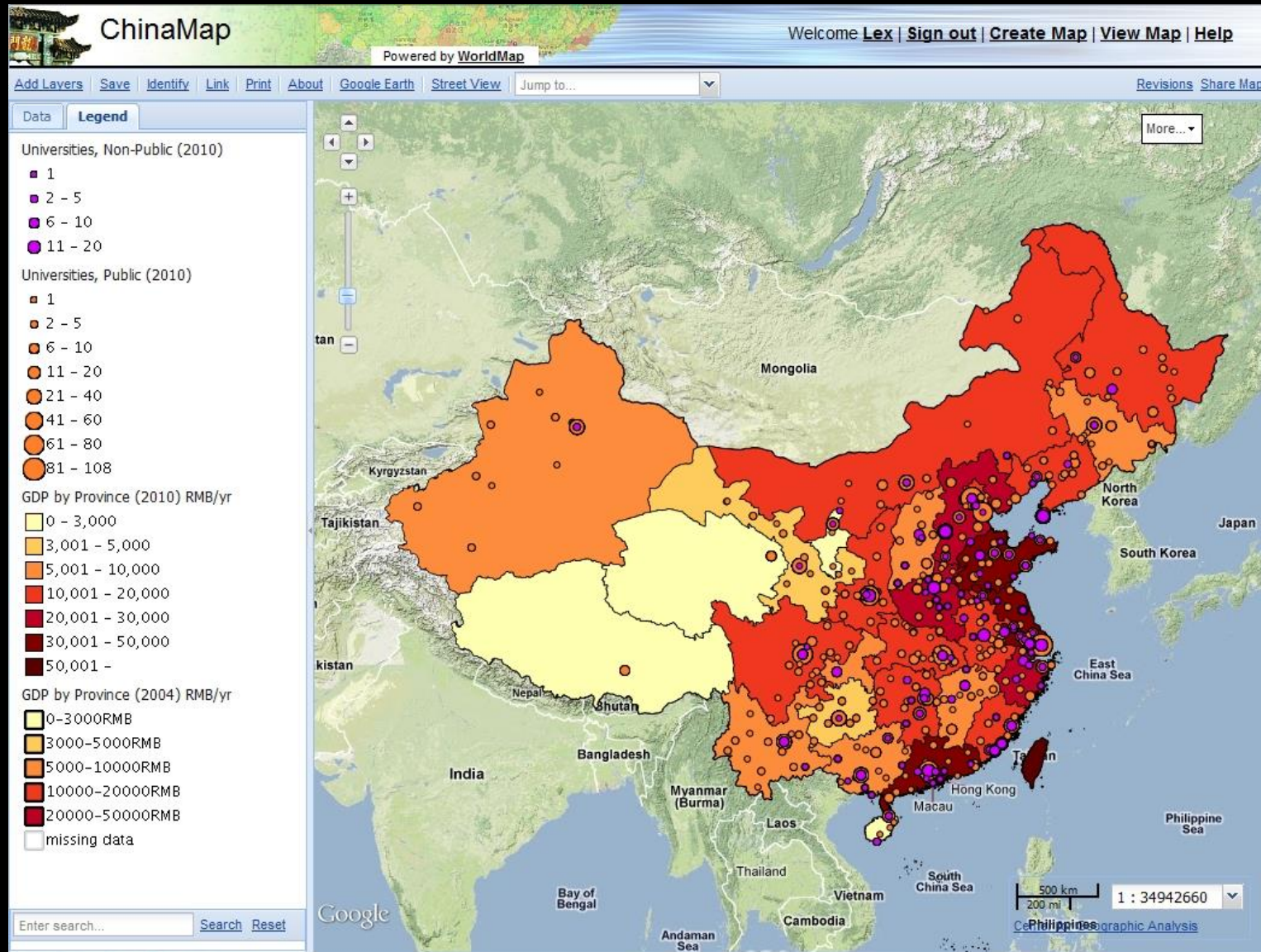
CHGIS: Version 5 - Republican Beijing (in process)



CHGIS: Version 5 - Buddhist GIS (14,000 locations)

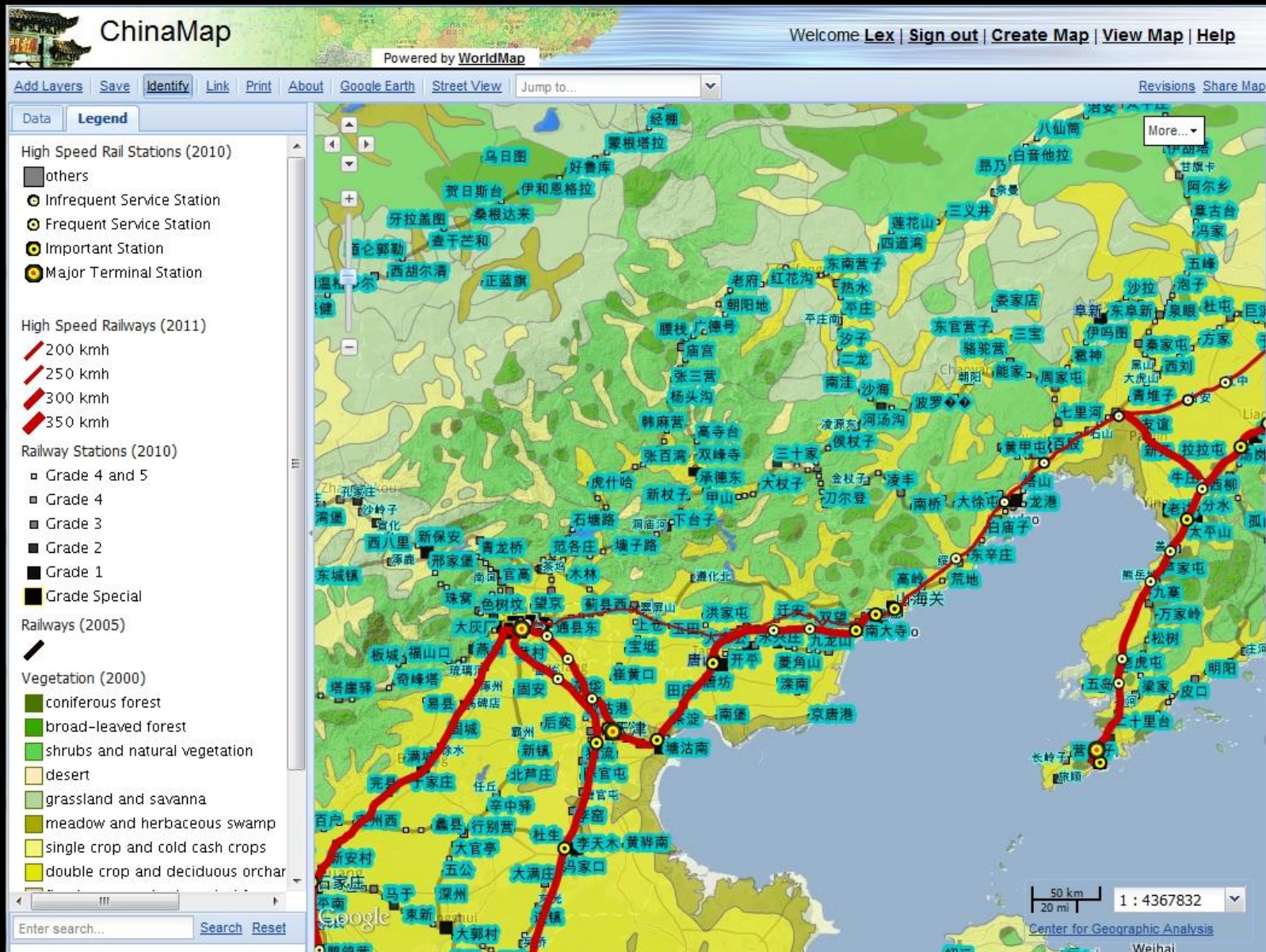


ChinaMap: Modern China data - Universities & GDP



See: <http://worldmap.harvard.edu/chinamap>

ChinaMap: Modern China data - Rail Stations / Veget.



ChinaMap: China Data Center – Townships layer



ChinaMap Welcome [Lex](#) | [Sign out](#) | [Create Map](#) | [View Map](#) | [Help](#)

Powered by [WorldMap](#)

[Add Layers](#) | [Save](#) | [Identify](#) | [Link](#) | [Print](#) | [About](#) | [Google Earth](#) | [Street View](#) | [Social Explorer](#) | [Revisions](#) | [Share Map](#)

Data | Legend

- Map Layers
 - Historical Places
 - Transportation
 - Research Projects
 - Census
 - Population by Province (2010) km2
 - Population Density (2000) km2
 - Population Density (1990) km2
 - Population Density (1982) km2
 - Population Density (1964) km2
 - Population Density (1953) km2
 - Sex Ratio (2000)
 - Sex Ratio (1990)
 - Sex Ratio (1982)
 - Population Age 65+ (2000)
 - Population Age 65+ (1990)
 - Education
 - Economy
 - GDP (2000) RMB/year
 - GDP (1996) RMB/year
 - GDP (1990) RMB/year
 - GDP by Province (2010)
 - GDP by Province (2004)
 - Energy
 - Environment
 - Public Health
 - Boundaries
 - Time Zones
 - Urban Areas Worldwide
 - Townships (2000) China Data Cen
 - Prefectures (2000) China Data Cer
 - Provinces (1997)
 - Climate & Weather
 - Utilities & Infrastructure
 - Topo Basemaps

Enter search... [Search](#) [Reset](#)

Google

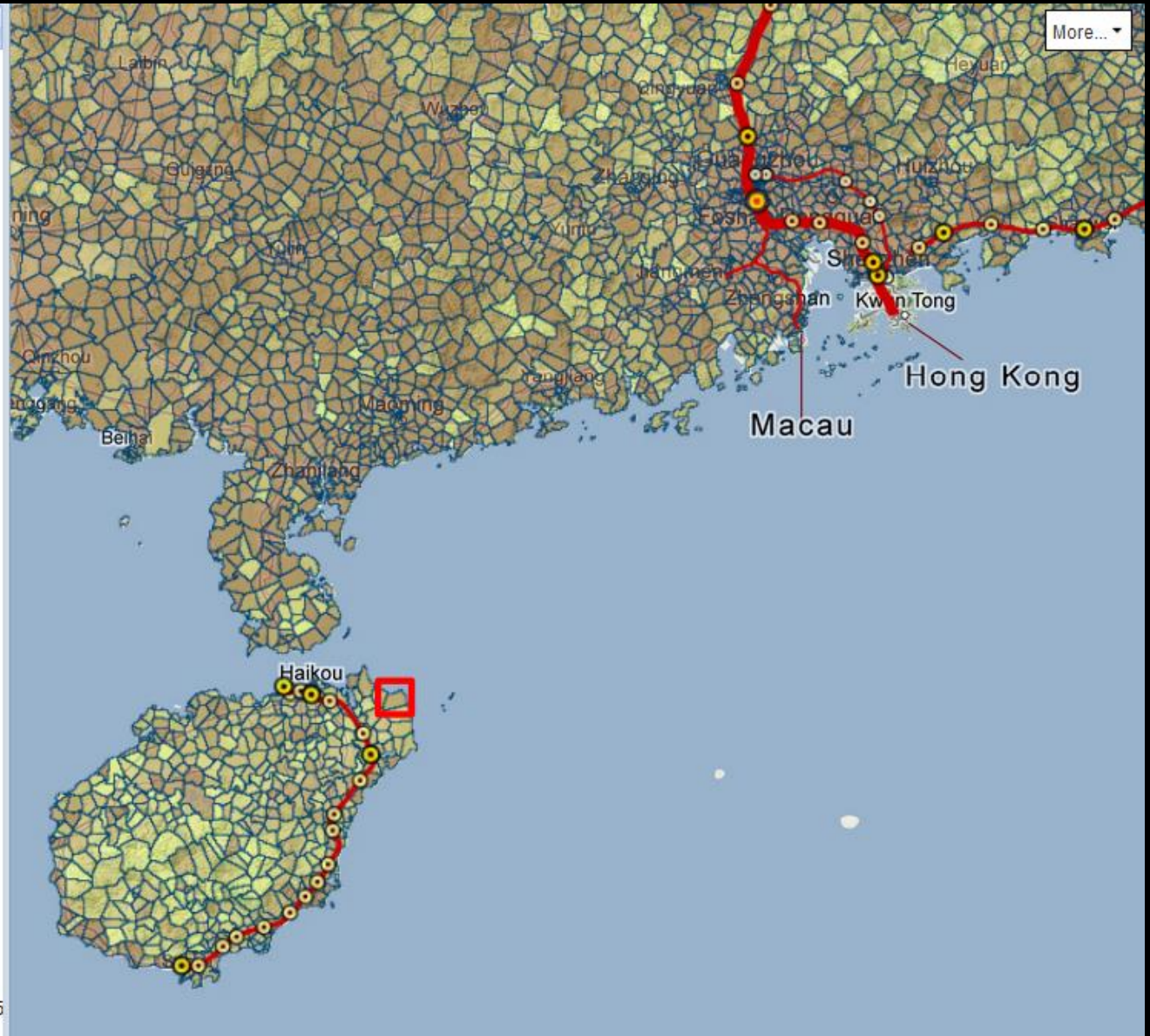
Center for Geographic Analysis

ChinaMap: CDC Townships layer - attributes

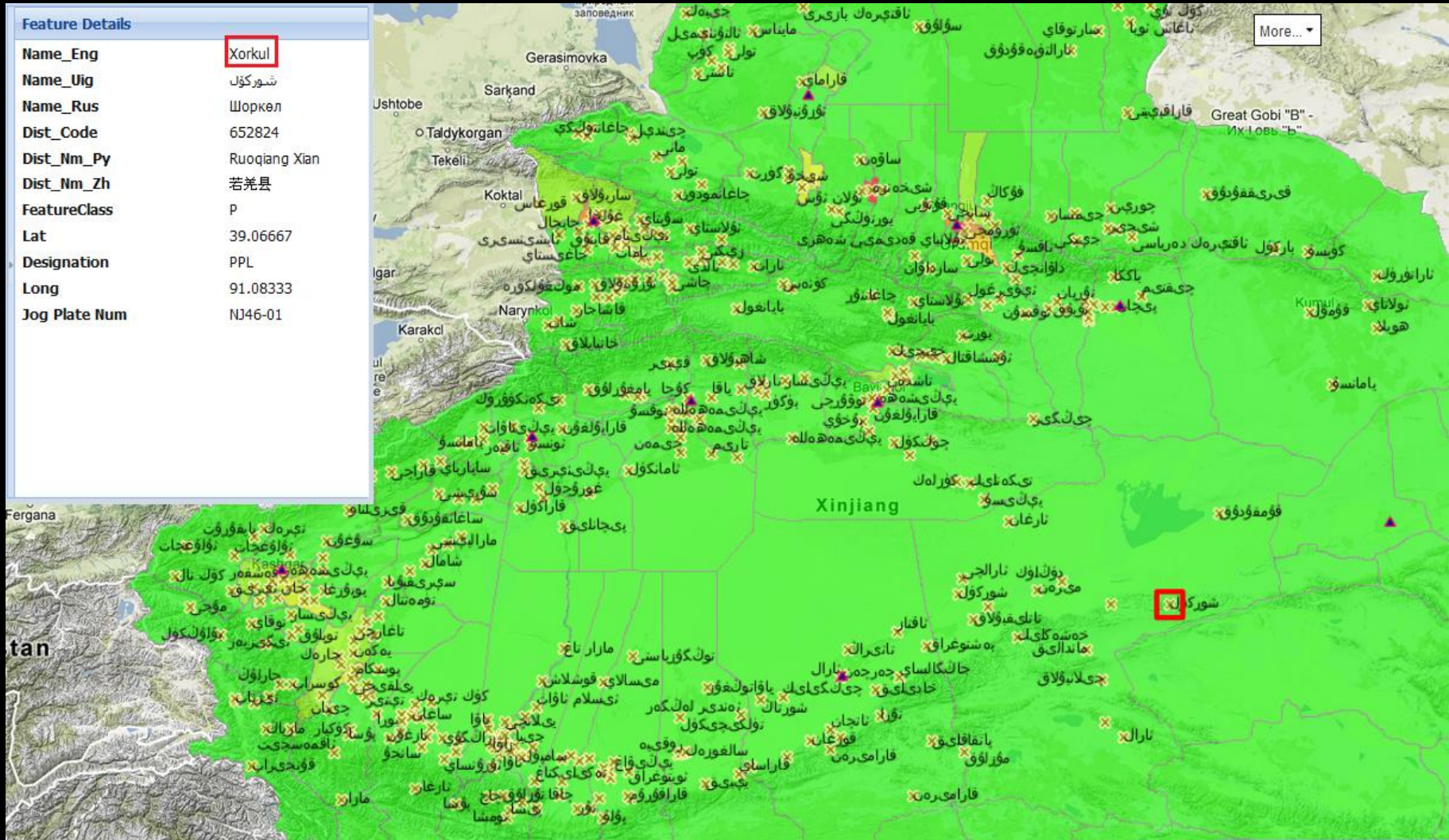


Feature Details

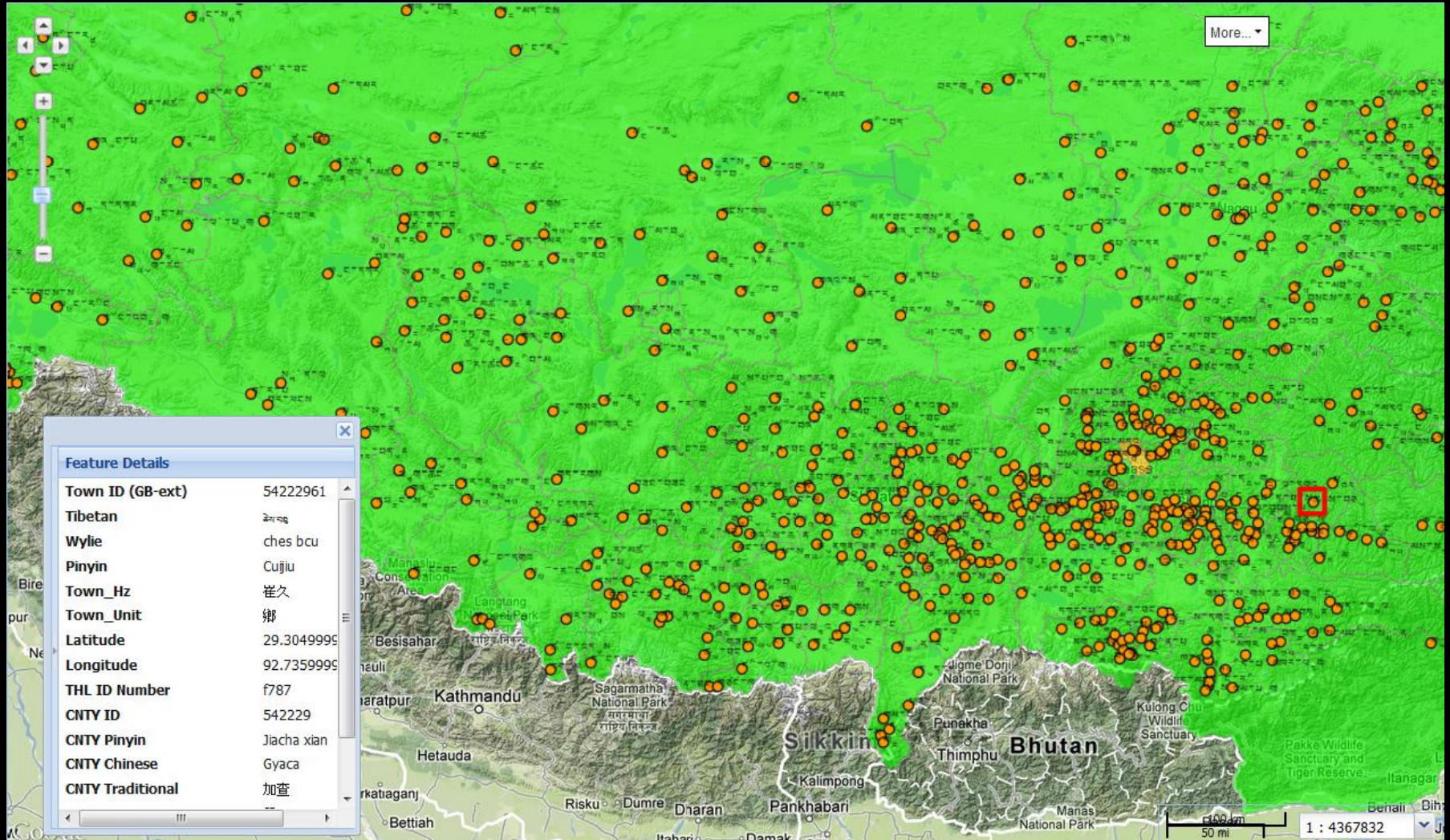
gbprov	46
prov_cname	海南省
prov_ename	Hainan
gbcity	4690
city_cname	模拟地区
city_ename	Munidiqu
gbcnty	469005
county_cname	文昌市
county_ename	Wenchang
gbtown	469005115
cname	昌洒镇
ename	Chang Sa Zhen
a101001	4141
a101002	4085
a101003	56
a101004	15759
a101005	8031
a101006	7728
a101007	103.920000
a101008	15460
a101009	7845
a101010	7615
a101011	103.020000
a101012	299
a101013	186
a101014	113
a101015	164.600000
a101016	3.780000
area	171.3987439941406



ChinaMap: Uighur Placenames (in vernacular script)



ChinaMap: Tibetan Townships (in vernacular script)



China's History in Maps - browse historical data layers



China's History in Maps Welcome [Lex](#) | [Sign out](#) | [Create Map](#) | [View Map](#) | [Help](#)

Powered by [WorldMap](#)

[Add Layers](#) | [Save](#) | [Create Feature](#) | [Edit Feature](#) | [Identify](#) | [Gazetteer](#) | [Print](#) | [Link](#) | [Google Earth](#) | [About](#) | [Notes](#) | [Street View](#) | [Jump to...](#) | [Revisions](#) | [Share Map](#)

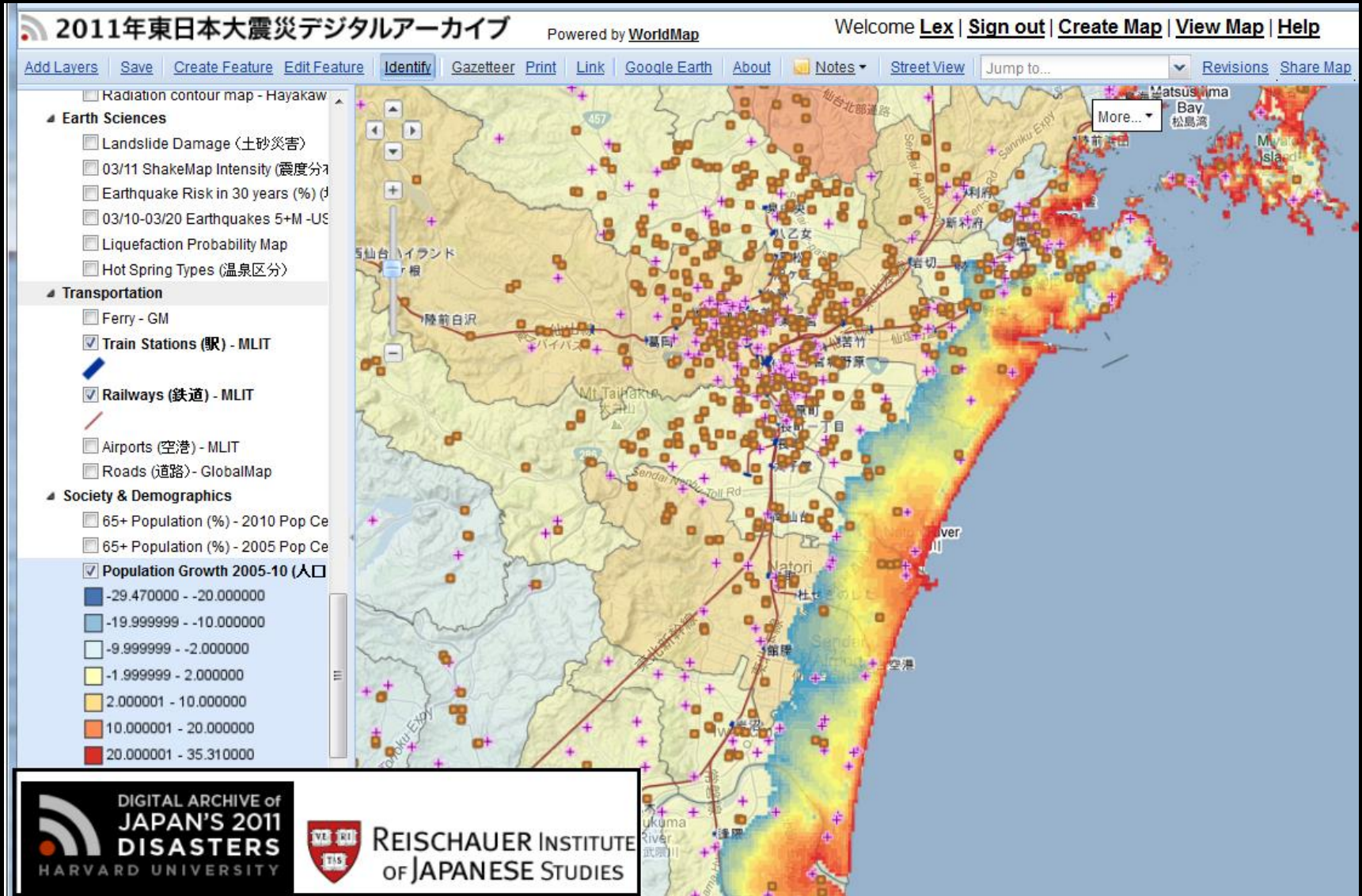
Overlays

- Historical Places**
 - Ming Garrisons (1363-1644)
 - Qing Courier Stops
 - Qing Courier Routes
 - Ming Qing Postal Stations
 - Ming Qing Postal Routes - Minor
 - Ming-Qing Postal Routes Main line
 - 1820 "Busy" Xian [ChinaW]
 - ChinaW [G.W. Skinner]
 - Beijing (1916) Districts
 - GrandCanalSong
 - GrandCanalYuan
 - GrandCanalSui
 - Beijing_Sites_DBR
- Historical Biography [CBDB]**
 - Qing Entry Exams (Persons)
 - Qing Exams (Heat Map)
 - Ming Entry Exams (Persons)
 - Ming Exams (Heat Map)
 - N. Song Entry Exams (Persons)
 - 1 - 5
 - 6 - 10
 - 11 - 15
 - 16 - 30
 - 31 - 45
 - 46 - 90

200 km
100 mi
1 : 17471330

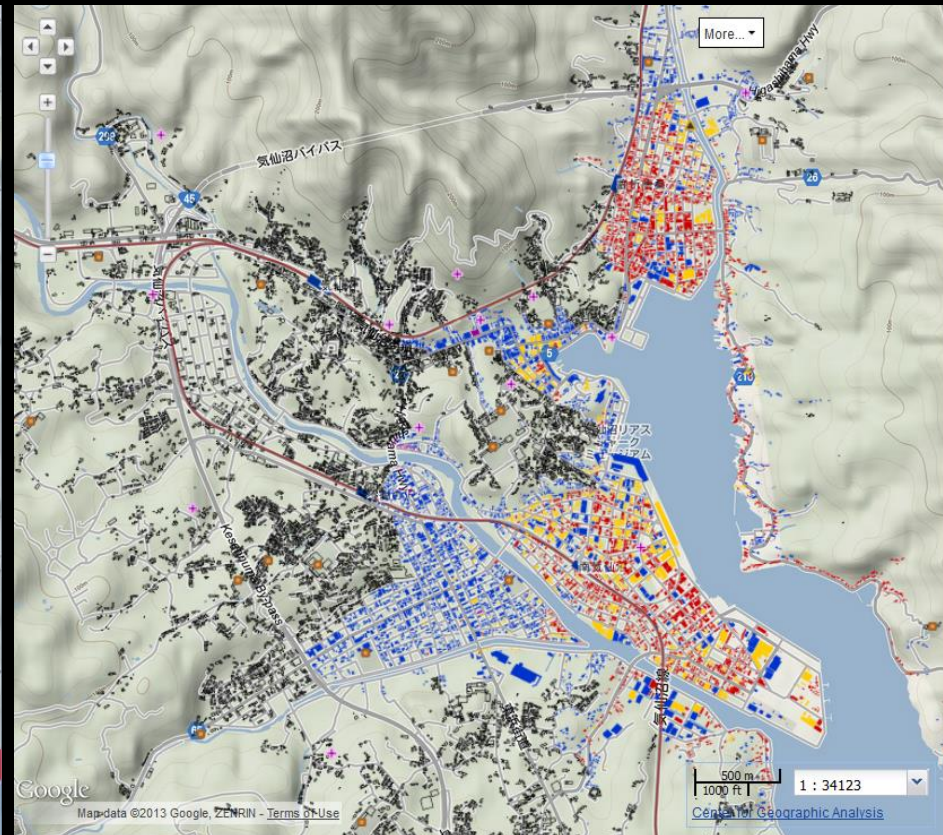
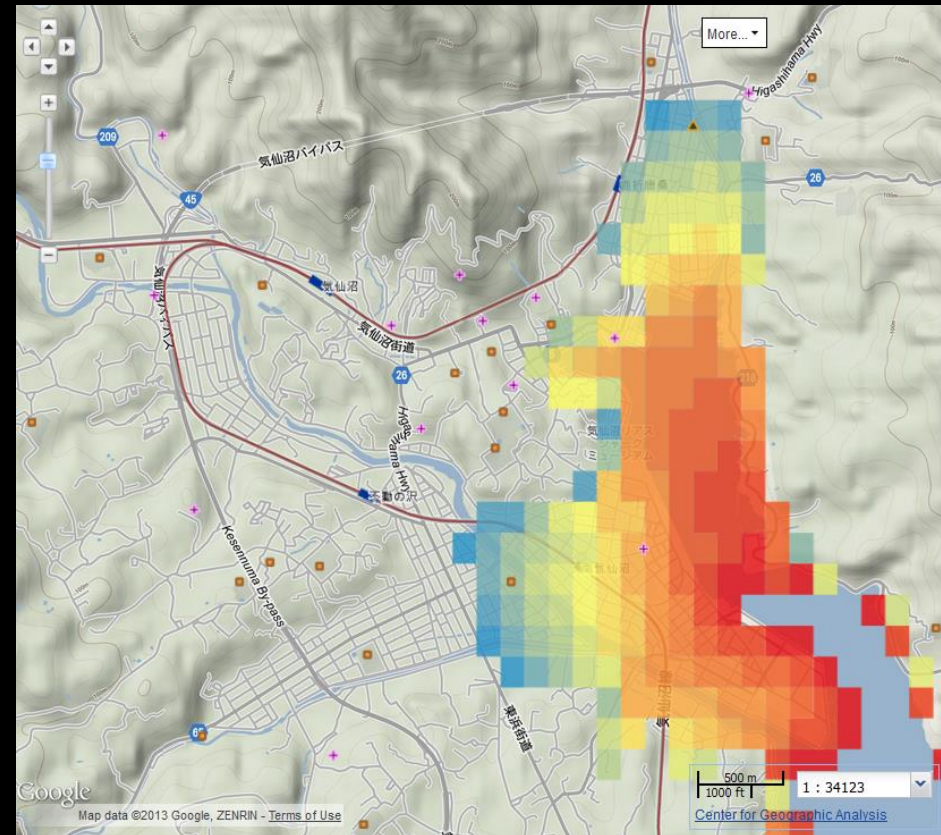
See: <http://worldmap.harvard.edu/china-hist>

JapanMap - modern data & Sendai Earthquake data

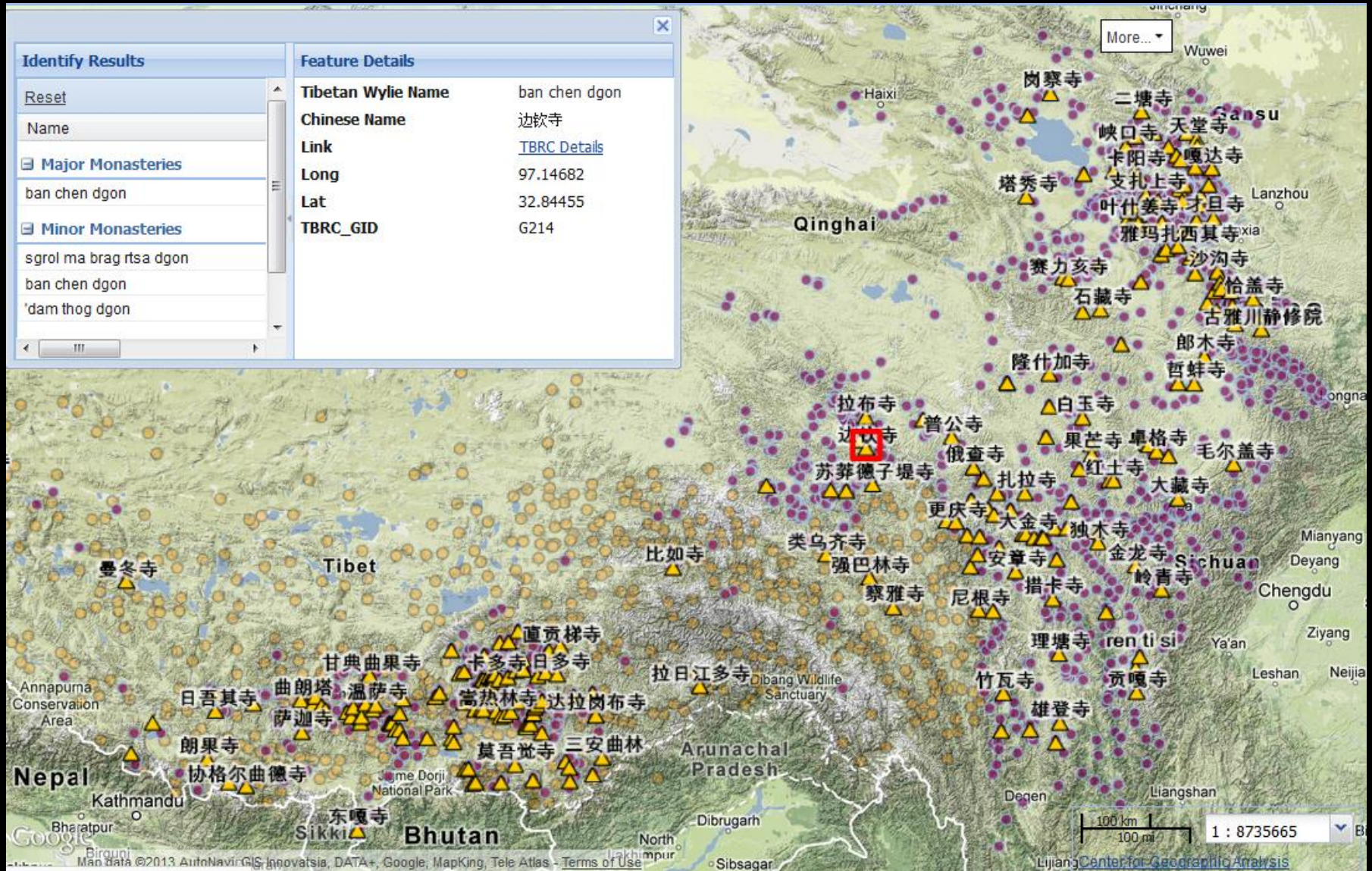


See: <http://worldmap.harvard.edu/japan>

JapanMap - Kesennuma flood damage




TibetMap - Monasteries of Tibet linking to TBRC



See: <http://worldmap.harvard.edu/maps/tibet>

TibetMap - > Tibetan Buddhist Resource Center



TB RC TIBETAN BUDDHIST RESOURCE CENTER 

Search the Library Search By

[Home](#) [Catalog](#) [Genres](#) [Subjects](#) [Persons](#) [Places](#) [Selections](#)

ban chen dgon

ban chen dgon

[Details](#) [Associated Places](#) [Associated Works](#) [Associated Persons](#)

TBRC Resource ID

G214

Place type

monastery

Names

Tibetan	ban chen dgon
Tibetan	sga ban chen dgon
Tibetan	ban chen dgon phun tshogs dar rgyas gling
English	Banchen Gon Puntsok Dargyeling
Tibetan	ban chen dgon
Chinese	边钦寺
Chinese	班青寺/班庆寺
Chinese	bianqin si

to access data:

skinner.hmdc.harvard.edu

fas.harvard.edu/~chgis

worldmap.harvard.edu

merrick lex berman

center for geographic analysis

mberman@fas.harvard.edu